



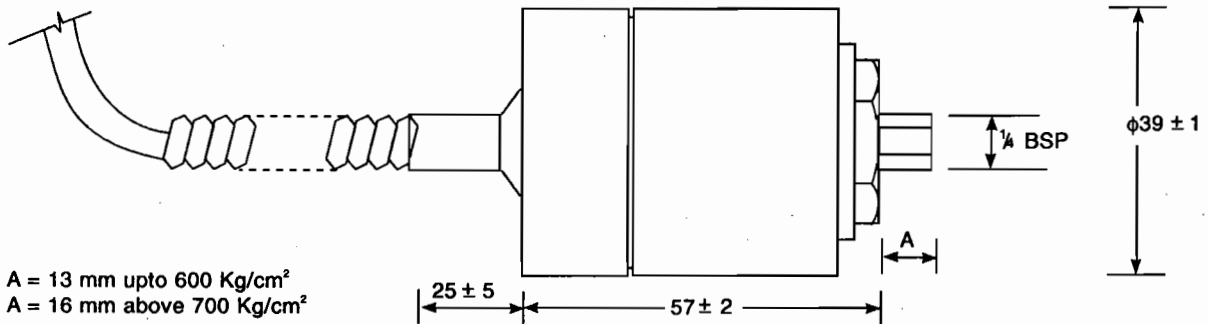
R.R.SENSORS PRESSURE TRANSDUCER

Offers Innovation Pressure Measurement

RRS Pressure Transducer is a high performance pressure sensor designed specially for critical applications to meet stringent pressure and other environmental conditions. The design offers high accuracy, full temperature compensation and high over load protection. The sensing element consists of metallic foil strain gauges bonded directly to a stainless steel diaphragm. The state of the art capabilities in transducer provide a convenient and reliable means of measuring the pressures of gases and liquids. The transducers are rugged, reliable and require virtually no maintenance.

SPECIAL FEATURES

- ☛ High Accuracy.
- ☛ Full temperature Compensation.
- ☛ No moving parts : high reliability.
- ☛ Easy to Install
- ☛ Low cost
- ☛ Robust design.



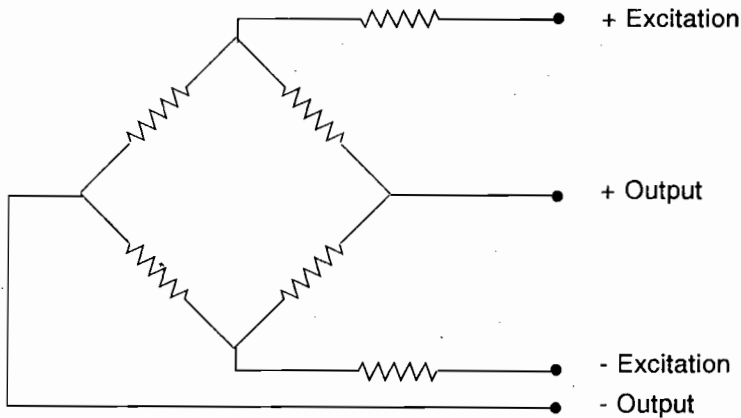
Note :- A = 13 mm upto 600 Kg/cm²
A = 16 mm above 700 Kg/cm²

SPECIFICATIONS

1	Model No.	:	PGX10, PGX20, PGX30, PGX50, PGX100, PGX200, PGX300, PGX500, PGX600, PGX 750, PGX 1000, PGX 1500
2	Pressure Ranges	:	10, 20, 30, 50, 100, 200, 300, 500, 600, 750, 1000, 1500 Kg/Cm ² .
3	Measurement Fluids	:	Any fluid compatible with stainless steel.
4	Supply Voltage	:	10V A.C. or D.C. (15V Maximum).
5	Full Scale output signal	:	1.5 ± 0.04 mv/v Upto 10 Kg/Cm ² & 2.0 ± 0.05mv/v for 20Kg/Cm ² and above
6	Bridge Resistance	:	350 ohms Nominal.
7	Static error band	:	Better than ± 0.5% R.O.
8	Combined Zero and span. temperature effect on accuracy	:	Less than ± 5.0% R.O./100 C.
9	Compensated temperature limits	:	0-55° C.
10	Long term Stability	:	Better than ± 0.5% R.O. over 6 months.
11	Electrical Connection	:	Flying leads 4 Core Shielded cable.
12	Enclosure	:	High quality stainless steel. All electrical components are sealed against adverse environmental conditions.

Abbreviation : R.O. = Rated Output.

Electrical Information :



Wiring

Input	Output
+ Red	- Green or Blue
- Black	+ White or Yellow

Important Points :

1. R R S Pressure Transducers will provide excellent service and superior Performance if proper care is taken during handling, installation, and use.
2. The most common causes of transducer damage are over loading, Improper Installation in improperly machined and plugged mounting holes.
3. The tip of the transducer must be protected from severe abrasives, dents & scores
4. The transducer should be removed only when there is no pressure in system.

Ordering Information :

1. Select Pressure Range
2. Select Model : (In model no, the right hand side integer specifies pressure range in Kg/cm²).

Pressure Range	Model	Quantity
XXXXX	YYY	ZZZ

Please Communicate to :



R.R.SENSORS & SYSTEMS.

Factory : # 17, BHADRAPPA ESTATE, MAGADI MAIN ROAD, KAMAKSHIPALYA, BANGALORE - 560079.

Ph : 080 - 23281697, E - mail : rrsensors@dataone.in; pasupathi@rrsensorsandsystems.com.

Branch office : # 08, GIRNAR APARTMENT, HIMAT NAGAR, BORIVLI WEST, MUMBAI - 400 091.

Ph : 022 -28906438,28929417, E - mail : sales@rrsensorsandsystems.com.